



Tuesday 2 July: 8:30am – 5:30pm

8:30am Registration

9:00am Welcome

George Tatham, Sheep Breeder Forum MC

9:15am Navigating the future: Beef + Lamb New Zealand's focus

Sam McIvor, B+LNZ CEO.

Sam will delve into key elements of B+LNZ's strategy which has been shaped by farmer feedback sessions held across the country. Hear how the organisation is positioned to address major themes voiced by farmers, including fair regulations, the future of the sector, production and profitability, farmer input, and advocacy.

Beef + Lamb New Zealand Genetics update

Dan Brier, General Manager B+LNZ Genetics

Dan will provide an overview of B+LNZ Genetics' programme for the next 12 months, with updates on Research and Innovation projects including Facial Eczema, Wormwise, Cool Sheep Programme, Breeder Education and Extension, and the transition to nProve.

Exploring the international genetics scene

Dr Jason Archer, B+LNZ Genetics

An insightful session with Jason who has recently returned from global trips attending genetics conferences, visiting large-scale stud farms, universities and research facilities. From emerging technologies to topics being discussed in the genetics realm, Jason brings a glimpse into the horizons shaping the future of our industry.

11:00am Morning tea

11:30am Pick-n-mix Workshops: choose one of the following:

1) Sheep of the Future

Dr Natalie Pickering (Focus Genetics) and Dr Tricia Johnson (AgResearch)

Like all farming systems, sheep operations face increasing economic, environmental, cultural and social challenges, including climate change and consumer expectations about their food. Genetic improvement has the potential to help with these challenges. This workshop will explore some of these challenges and the research programmes that are underway to address them, including time for discussion to explore what breeders and commercial farmers see as the priorities in this space.

2) Breeding toward low-methane genetics

Suzanne Rowe and John McEwan, AgResearch

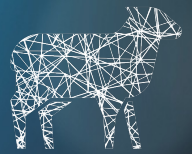
A dedicated workshop for stud breeders wanting to incorporate low methane genetics into their breeding programmes. Supported by the Cool Sheep® Programme, it is an opportunity for attendees to engage directly with experts Suzanne Rowe and John McEwan from AgResearch to learn how to maximise the potential of their genotype and phenotype data within the New Zealand Genetic Evaluation (NZGE).

Note: This session is tailored for those committed to enhancing their flocks in this specific trait, without delving into broader debates on methane science or agricultural emissions pricing.

3) Maximising potential: a deep dive into nProve

B+LNZ Genetics Systems Team

Abigail Stanley, David Campbell and Georgie Walker will run interactive sessions on the nProve breeder-specific features and functions of this powerful tool. This will include answering questions, demonstrating basic functions in nProve (Breeder & Public), new features, tips and tricks – so you can extract meaningful data and reports for your breeding programme and your clients.



Tuesday 2 July: 8:30am – 5:30pm (continued)

12:15pm Pick-n-mix Workshops: choose one of the following:

4) Parasite resistance in breeding programmes.

Kathryn McRae, AgResearch; Suzi Keeling and Cara Brosnahan, B+LNZ Research team

This workshop delves into important topics such as FEC, CARLA and Parasite Resilience. This session isn't just about knowledge transfer; it's an opportunity for active participation and collaborative discussions to offer valuable insights influencing your breeding programmes.

5) CPT/Connectedness workshop

Sharon McIntyre & Sarah Powdrell (B+LNZ Genetics), Dr Neville Jopson, AbacusBio

With a legacy spanning two decades, the CPT is a long-standing and critical component of New Zealand's sheep genetics system. It provides the opportunity to benchmark rams and create genetic connections across breeds that would not happen naturally in the industry. What can breeders do to get the most out of this cornerstone project? This workshop takes breeders through strategies to get maximum benefits from the CPT programme and enhance connectedness in traits crucial to their programmes.

6) EID technology session

An interactive workshop focused on Electronic Identification (EID) technology, where breeders can enhance their skills in utilising this tool in their operations. This workshop is designed to address common scenarios, answer questions, and provide practical guidance on setting up and optimizing EID technology. With multiple stations around the room, attendees can navigate specific topics and receive assistance on uploading data, troubleshooting, and exploring frequently asked questions.

1:00pm Lunch

2:00pm Pick-n-mix Workshops: choose one of the following:

Descriptions have not been included below as these workshops are a repeat from the earlier sessions.

- **Maximising potential: a deep dive into nProve Breeder**
B+LNZ Genetics technical team
- **CPT/Connectedness workshop**
Sharon McIntyre & Sarah Powdrell (B+LNZ Genetics), Dr Neville Jopson, AbacusBio
- **EID technology session**

2:45pm Meat to Metrics: how we measure meat quality and how it's used in the genetic evaluation

Dr Neville Jopson, AbacusBio; Daniel Brown, AGBU; Craig Hickson, Progressive Meats

An opportunity to hear about meat quality from both a processor and an evaluation perspective. This session offers insights into the intricacies of measuring meat quality during processing from Craig Hickson of Progressive Meats Ltd who has utilised several different meat quality technologies. Daniel Brown of UNE's Animal Genetics and Breeding Unit will describe how meat quality is evaluated and used in Sheep Genetics Australia's evaluations and Neville Jopson will describe how different quality assessments are utilised within our NZGE. This session concludes with a Q+A panel with all three speakers.

3:30pm Afternoon tea

3:45pm Networking afternoon

- **Satellite meetings (Breeder Groups):** 50-minute meeting slots
- **Sponsor sessions:** available to those not attending satellite meetings
- B+LNZ staff on hand to for one-on-one discussions

5:30pm Meetings end

6:30pm Pre-dinner drinks (Addington Events Centre)

7:30pm Seated for dinner



Wednesday 3 July: 7:30am – 3:30pm

7:30am Breakfast served (buffet)

8:00am Breakfast Session: B+LNZ Genetics updates

B+LNZ Genetics

Join us bright and early for breakfast and learn about the latest updates on the New Zealand Genetic Evaluation. Our team will cover important topics including the recently released Terminal Evaluation, Meat Quality/IMF, Jade, Connectedness, DQI, and nProve developments.

9:30am Morning tea

Open mic discussion

10:00am This session is dedicated to answering questions that may not have found a spotlight elsewhere in the conference. Our team are ready to provide updates, share knowledge and answer important questions.

11:15am Buses depart for field trip

12:00pm Field Trip: Willesden Farm, Ataahua Banks Peninsula

Willesden farm hosted two projects under the Hill Country Future Partnership programme with the aim to enhance decision-making for farmers regarding suitable locations and potential benefits of introducing forage legumes.

Group stations, including practical demonstrations and industry speakers, covering a range of topics relevant to sheep breeders.

2:30pm Buses depart from field trip

3:30pm Buses arrive at Christchurch Airport / Addington Events Centre
